



# FURTHER EDUCATION PROSPECTUS 25-26

REAL LEARNING



BANGOR | DOWNPATRICK | LISBURN | NEWTOWNARDS



# CONTENTS

<b>Welcome</b>	<b>4</b>
<b>Further Education Study</b>	<b>6</b>
<b>Entry Requirements</b>	<b>8</b>
<b>Skills For Life &amp; Work</b>	<b>12</b>
<b>Access To Higher Education</b>	<b>14</b>
<b>Further Education</b>	<b>16</b>
<b>Further Education Courses</b>	<b>18</b>
<b>NI Traineeships</b>	<b>26</b>
<b>NI Traineeship Courses</b>	<b>30</b>
<b>Apprenticeships</b>	<b>36</b>
<b>Apprenticeship Courses</b>	<b>40</b>
<b>Why Study At SERC?</b>	<b>48</b>
<b>Your Programme For Learning</b>	<b>50</b>
<b>The Student Experience</b>	<b>52</b>
<b>Real Skills For Real Life</b>	<b>53</b>
<b>Project Based Learning (PBL)</b>	<b>54</b>
<b>Student Support</b>	<b>58</b>
<b>International Travel</b>	<b>60</b>
<b>How To Apply In Four Easy Steps</b>	<b>62</b>



# WELCOME

**Welcome to South Eastern Regional College's Further Education Prospectus. We are the top-performing college in Northern Ireland, and we are proud to present here the wide range of opportunities available through our vocational courses, apprenticeships and traineeships.**

We are committed to delivering real learning for real life, working with partners in industry, education, business and government to create an experience which prepares our students for employment and the challenges of the wider world.

We strive to maintain an environment where every student can benefit fully from their time at SERC. The college has an extensive network of support services, including careers advice, learning support and student finance guidance, as well as tailored support for young carers, to help you meet any challenges which may arise. We are delighted that you are considering SERC for your next step in education. Browse our prospectus, explore our website and come and talk to us at an open evening to find out more about the real advantages of learning at SERC.

**Tommy Martin**  
**Principal and Chief Executive**



# FURTHER EDUCATION STUDY

## WHAT WE OFFER

**Further Education (FE) courses are open to all. They are suitable for students aged 16 and over and include Diplomas, Extended Diplomas and Certificates.**

At SERC you can choose from a range of vocational options, apprenticeships and traineeships. These qualifications cover levels 1, 2 and 3 and all options include practical tasks to develop your broader skills and challenge you to achieve. You will complete assignments and tests throughout the year, linking theory and practical work. We also offer A-level courses at our Bangor Campus.



“

**I love the placement part of my course; we get to put what we learn into practice working in a childcare setting. At my placement I'm a classroom assistant so I get to help the children with their work and assist the teacher too.**

”

**Katie Simpson**

**Level 3 Diploma for Children's Care, Learning and Development**



# ENTRY REQUIREMENTS

Your chosen course may have specific entry criteria, so please check individual course details on our website course listings. For all courses there is an interview requirement. There may be more specific requirements for some courses; e.g. for creative arts courses you may be asked for a portfolio of your work.

If you have disabilities or learning difficulties, you may not need to meet some entry requirements - our Learning Support Team can advise you.

**Call 0345 600 7555 for further advice.**

“

The apprenticeship route has been perfect for me. I enjoy being out and about, being busy, and the practical work. I am part of a small team, and we all work well together. If there is something you don't know, you just ask as the team has a wealth of experience.

”

**Joshua Orr**

Level 3 Apprenticeship NI in Bricklaying



## ENTRY LEVEL

### Vocational Courses

Skills for Life and Work.

#### Entry Requirements

No formal qualifications required.

#### Where it can take you

Progress to Level 1 study.

## LEVEL 1

### Vocational Courses

BTECs, Awards, Certificates, Diplomas, NVQs, Skills for Life and Work.

#### Entry Requirements

No formal qualifications required.

#### Where it can take you

Progress to Level 2 study or use skills to start work.

## LEVEL 2

### Vocational Courses

Apprenticeships and Traineeships.

#### Equivalent

GCSEs.

#### Entry Requirements

4 GCSEs at grades D-G including English and Maths at grade F or higher or equivalent. Enhanced criteria in Maths and English may also apply, refer to individual course descriptions for details. Accreditation for Prior Experiential Learning (APEL) may also be considered.

#### Where it can take you

Progress to Level 3 study or use skills to start work.

## LEVEL 3

### Vocational Courses

BTECs, Diplomas, Apprenticeships and Access to Education.

#### Equivalent

A Levels.

#### Entry Requirements

5 GCSEs at Grades C/4 or above including English Language and/or Maths (some courses may require both, please check your individual course). Or successful completion of a Level 2 related qualification and interview.

#### Where it can take you

Progress to Higher Education at SERC or at university, or use your skills to start work.

# PATHWAYS TO SUCCESS

A Level 2 qualification is the equivalent of five GCSEs. Successful completion of a Level 2 course will enable you to progress to a Level 3 course and then to Higher Education, university or employment.

If you're leaving school with five or more GCSEs, a Level 3 course at SERC is ideal. These are designed to equip you with the knowledge and the practical skills you will need to continue to Higher Education (HE) courses at SERC or university, or to gain employment in your chosen field. Level 3 qualifications generate UCAS points for entry to Higher Education, just like A-Levels.



## BTEC NATIONALS GRADES VS UCAS TARIFFS (RQF)

Extended Diploma	Diploma	Foundation Diploma	Extended Certificate	Certificate	UCAS Tariff Points
D*D*D*					168
D*D*D					160
D*DD					152
DDD					144
DDM					128
DMM	D*D*				112
	D*D				104
MMM	DD				96
		D*			84
MMP	DM				80
		D			72
MPP	MM				64
			D*		56
PPP	MP	M	D		48
	PP		M		32
				D*	28
		P		D	24
			P	M	16
				P	8

- D\* = Distinction Star
- D = Distinction
- M\* = Merit Star
- M = Merit
- P\* = Pass Star
- P = Pass



# SKILLS FOR LIFE & WORK

**Skills for Life and Work is a programme for young people who need entry-level and/or Level 1 training and qualifications. If school and GCSEs did not go as you hoped, and you want to get back on track, this programme is ideal.**

## ELIGIBILITY

Skills for Life and Work is open to young people aged 16-17 years. Those who have a disability can join if they are under 22 years old, and young people who have an in-care background are eligible until they reach the age of 24. A training credit from the careers service is required to join; contact a careers advisor if you are interested in Skills for Life and Work. All participants will receive an Education Maintenance Allowance (EMA) of £40 per week. This allowance is not means-tested.



## All Skills for Life and Work participants will undertake:

A vocational (professional and technical) qualification

Personal development and employability qualifications

Activities to help you learn more about the world of work, including a substantial work placement when you are ready

Essential Skills qualifications (according to what you need)

There is also the opportunity to get involved in Duke of Edinburgh/ Gaisce.

Each participant will work with staff to agree a personal training plan. This will set out their Skills for Life and Work goals, the regulated qualifications they plan to undertake, other learning activities and work placement details.

SERC tutors have the expertise to help participants to deal with barriers that get in the way of their learning and achievement.





# ACCESS TO HIGHER EDUCATION

**Access to Higher Education courses are for you if you have been out of formal education for two or more years.**

These courses develop your personal and academic confidence and lead to Higher Education courses such as Degrees, Foundation Degrees, HNDs and HNCs as well as Higher-Level Apprenticeships (HLAs). Many of our Access students progress to university, while others continue studying at SERC on a Higher Education course. You will gain a range of knowledge and develop academic skills through a range of subjects, which can be tailored to the career or study route you wish to follow. Options taught in the Access course include science, social science, humanities and mathematics.



“

I would highly recommend the Access programme as the pace of work is very manageable. The best things I've experienced since beginning the course are the relaxed, confidence building environment, the supportive teaching staff, the friendly atmosphere and the crèche at Newcastle Campus, which is excellent.

”

**Dawn Murray**  
Level 3 Access Diploma In  
Foundation Studies





# FURTHER EDUCATION

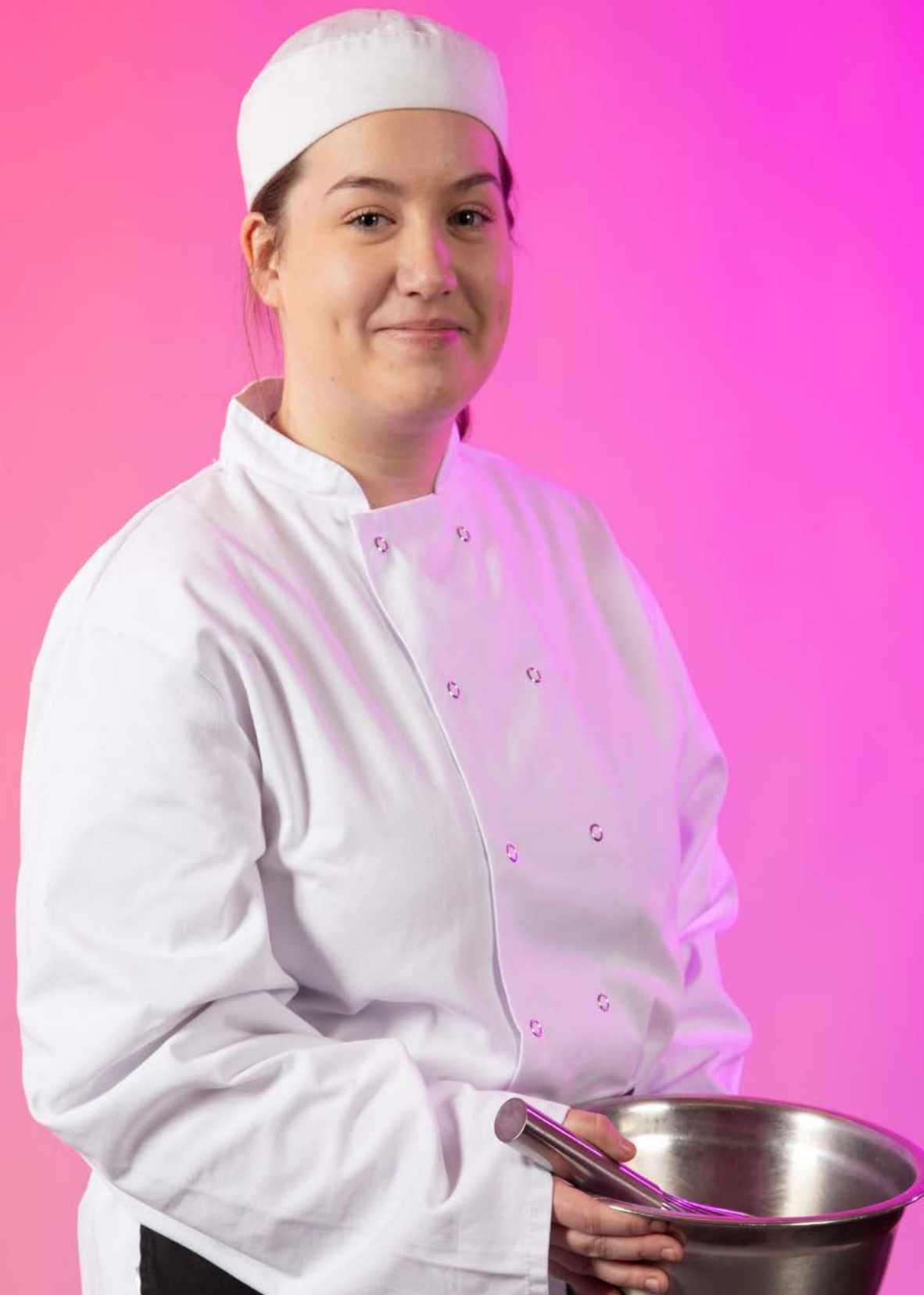
## SUBJECTS WE OFFER:

- ACCESS TO HE
- ART & DESIGN
- BEAUTY & HOLISTIC THERAPIES
- BIO SCIENCES
- BUSINESS & MANAGEMENT
- CARPENTRY & JOINERY
- COMPUTING/SOFTWARE
- ENGINEERING/NETWORKING
- CONSTRUCTION STUDIES
- EARLY YEARS
- ENGINEERING
- GCE A LEVEL
- HAIRDRESSING
- HEALTH & CARE
- HOSPITALITY & CATERING
- MEDIA
- MOTOR VEHICLE
- MUSIC
- PERFORMING ARTS
- PHOTOGRAPHY
- PUBLIC SERVICES
- SKILLS FOR LIFE & WORK
- SPORT & RECREATION
- TRAVEL & TOURISM



[serc.ac.uk/full-time](https://serc.ac.uk/full-time)

Click to view all full-time courses



“

Being in the kitchen and learning how to decorate the things we make in a more professional way is my favourite part of the course.

**Rebekah McMullan**

**Level 3 NVQ Diploma in Professional Cookery - Patisserie and Confectionery**

”

# FURTHER EDUCATION COURSES



## ACCESS TO HE

Code: P10005

**Level 3 Access Diploma In Foundation Studies**

**Bangor, Newcastle, Downpatrick, Lisburn, Newtownards, Ballynahinch**

Code: P10473

**Level 3 National Extended Diploma in Animal Management**

**Bangor, Downpatrick, Lisburn**



## ART & DESIGN

Code: P10525

**Level 3 Technical Diploma in Art & Design**

**Bangor, Downpatrick, Lisburn**

Code: P10526

**Level 3 Technical Diploma in Art & Design**

**(Graphic Design & Illustration)**

**Bangor**



Code: P10897

**Level 3 Foundation Diploma in Art & Design & Media Practice**

**Bangor, Downpatrick, Lisburn**



Code: P11097

**Level 3 Foundation Diploma in Ceramics**

**Bangor**

## BEAUTY & HOLISTIC THERAPIES

Code: P10489

**Level 3 NVQ Diploma in Beauty Therapy General**

**Bangor, Lisburn**

Code: P10502

**Level 3 NVQ Diploma in Spa Therapy**

**Downpatrick**



## BIO SCIENCES

Code: P10474

**Level 3 National Extended Diploma in Applied Science**

**Bangor, Downpatrick, Lisburn**



## BUSINESS & MANAGEMENT

Code: P10475

**Level 3 National Extended Diploma in Business**

**Bangor, Lisburn**





## CARPENTRY & JOINERY

Code: P10430

**Level 3 Diploma in Bench Joinery**  
**Lisburn**



## COMPUTING/SOFTWARE ENGINEERING/NETWORKING

Code: P10439

**Level 3 National Diploma in IT - IT Professional**  
**Bangor, Downpatrick, Lisburn, Newtownards**

Code: P10457

**Level 3 National Extended Diploma in IT - IT Professional**  
**Bangor, Downpatrick, Lisburn, Newtownards**

Code: P11133

**Level 3 University Access Diploma in Computing & Engineering Sciences**  
**Bangor, Lisburn**



## CONSTRUCTION STUDIES

Code: P10404

**Level 3 National Extended Diploma in Construction & the Built Environment**  
**Bangor, Downpatrick, Lisburn**

Code: P10997

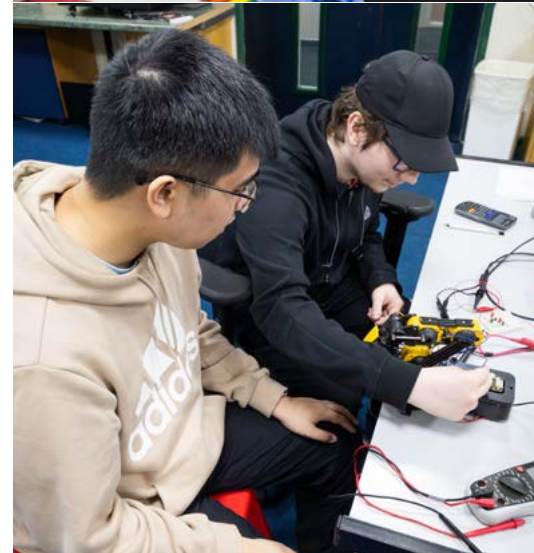
**Level 3 National Extended Diploma in Civil Engineering**  
**Bangor, Downpatrick, Lisburn**



## EARLY YEARS

Code: P10426

**Level 3 Diploma for Children's Care, Learning & Development**  
**Downpatrick, Lisburn, Newtownards**



## ENGINEERING

Code: P10423

**Level 3 National Diploma Engineering - Advanced Electronics**  
**Bangor, Lisburn**

Code: P10424

**Level 3 National Diploma Engineering - Advanced Manufacturing**  
**Bangor, Lisburn**

Code: P10425

**Level 3 National Diploma Engineering - Mechatronics**  
**Downpatrick**

Code: P10452

**Level 3 National Extended Diploma Engineering - Advanced Electronic**  
**Bangor, Lisburn**

Code: P10453

**Level 3 National Extended Diploma Engineering - Mechatronics**  
**Downpatrick**

Code: P10455

**Level 3 National Extended Diploma Engineering - Advanced Manufacturing**  
**Bangor, Lisburn**







## GCE A LEVEL

Code: P10162

**A Level**

**Bangor**



## HAIRDRESSING

Code: P10488

**Level 3 NVQ Diploma in Barbering**

**Lisburn**

Code: P10496

**Level 3 NVQ Diploma in Hairdressing**

**Bangor, Downpatrick, Lisburn**



Code: P11253

**Level 3 Diploma in Fashion, Theatre & Media Hair & Makeup Studies**

**Bangor, SERC Professional Skills Centre, Lisburn**

Code: P10488

**Level 3 NVQ Diploma in Barbering**

**Bangor, SERC Professional Skills Centre, Lisburn**



## HEALTH & CARE

Code: P10469

**Level 3 National Diploma in Health & Social Care**

**Downpatrick, Lisburn, Newtownards**

Code: P10476

**Level 3 National Extended Diploma in Health & Social Care (Health Studies)**

**Downpatrick, Lisburn, Newtownards**



## HOSPITALITY & CATERING

Code: P10505

**Level 3 NVQ Diploma in Professional Cookery - Patisserie & Confectionery**

**Bangor, Lisburn**



Code: P11072

**Level 3 Diploma Hospitality with Events**

**Bangor**

Code: P11096

**Level 3 Diploma in Professional Chef**

**Bangor, Downpatrick, Lisburn**

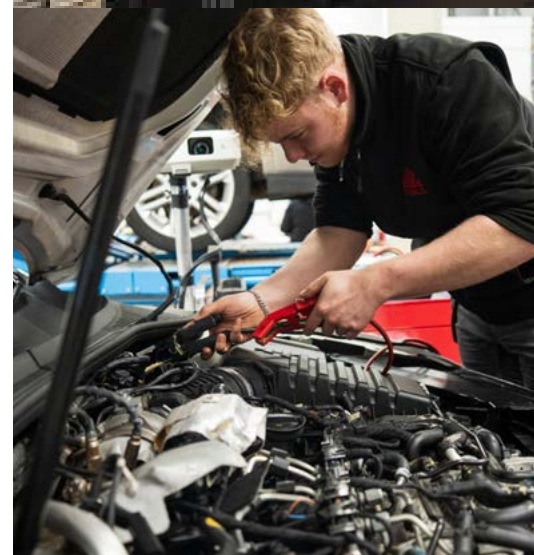


## MEDIA

Code: P11213

**Pearson BTEC Level 3 National Extended Diploma in Creative Media Practice**

**Bangor, Downpatrick, Lisburn**



## MOTOR VEHICLE

Code: P10466

**Level 3 Motorsport Engineering**

**Bangor**





## MUSIC

Code: P10477

**Level 3 National Extended Diploma in Music**  
**Bangor, Lisburn**

Code: P10478

**Level 3 National Extended Diploma in Music Technology**  
**Bangor**



## PERFORMING ARTS

Code: P10480

**Level 3 National Extended Diploma Performing Arts Practice**  
**Bangor, Lisburn**

Code: P10481

**Level 3 National Extended Diploma in Performing Arts Practice (Dance)**  
**Bangor**



## PHOTOGRAPHY

Code: P10527

**Level 3 Technical Diploma in Art & Design (Photography)**  
**Bangor**



## PUBLIC SERVICES

Code: P10926

**Level 3 National Extended Diploma in Uniformed Protective Services**  
**Bangor**



## SKILLS FOR LIFE & WORK

Code: P10689

**Level 1 Skills For Life & Work**  
**Bangor, Downpatrick, Lisburn, Newtownards**

Code: P11049

**Introductory Foundation Learning**  
**Downpatrick, Lisburn**



## SPORT & RECREATION

Code: P10479

**Level 3 National Extended Diploma in Sport**  
**Bangor, Downpatrick, Lisburn**

Code: P11194

**Level 3 National Diploma in Sport, Fitness & Personal Training**  
**Bangor, Downpatrick, Lisburn**



## TRAVEL & TOURISM

Code: P10450

**Level 3 Diploma in Travel & Tourism**  
**Bangor, Downpatrick, Lisburn**



# NI TRAINEESHIPS

## WHAT IS AN NI TRAINEESHIP?

The NI Traineeship programme is a high-quality vocational education and training programme and is aimed at school leavers who aspire to work within a specific sector. The NI Traineeship programme delivers a Level 2 qualification and can lead to a Level 3 apprenticeship, or a Level 3 FE course.

- Practical learning - in SERC's fantastic facilities and on a work placement in your chosen industry
- A qualification equivalent to at least three GCSEs
- A "transversal skills" qualification - showing you have the personal skills needed in the workplace
- Essential Skills in numeracy & literacy
- Personal advice and support throughout



“

I love the days in the workshop in which we get to do a simulated placement. It involves learning the basics of bricklaying and then putting what we learn into practice by building brick pillars and walls.

”

**Niall Kelly**

Level 2 Traineeship in Bricklaying



# NI TRAINEESHIP OPPORTUNITIES AT SERC

- ANIMAL CARE
- ART & DESIGN
- BEAUTY & HOLISTIC THERAPIES
- BIO SCIENCES
- BRICKLAYING
- BUSINESS & MANAGEMENT
- CARPENTRY & JOINERY
- COMPUTING/SOFTWARE  
ENGINEERING/NETWORKING
- CONSTRUCTION STUDIES
- EARLY YEARS
- ELECTRICAL INSTALLATION
- ENGINEERING
- HAIRDRESSING
- HEALTH & CARE
- HOSPITALITY & CATERING
- MEDIA
- MOTOR VEHICLE
- MUSIC
- PLASTERING
- PLUMBING
- SPORT & RECREATION
- TRAVEL & TOURISM



[serc.ac.uk/traineeship](https://serc.ac.uk/traineeship)

Click to view all NI Traineeship courses



“

It doesn't feel like a classroom, it feels like you are in the industry. There are people coming in for cuts, you are doing what you would be doing in a shop. Every day is different and it's so much more interesting, getting to work on real clients.

”

**Brandon Hill**  
Level 2 Traineeship in Barbering

# NI TRAINEESHIP COURSES



## ANIMAL CARE

Code: P11012

**Level 2 Traineeship in Animal Care**  
Bangor, Downpatrick, Lisburn



## ART & DESIGN

Code: P11181

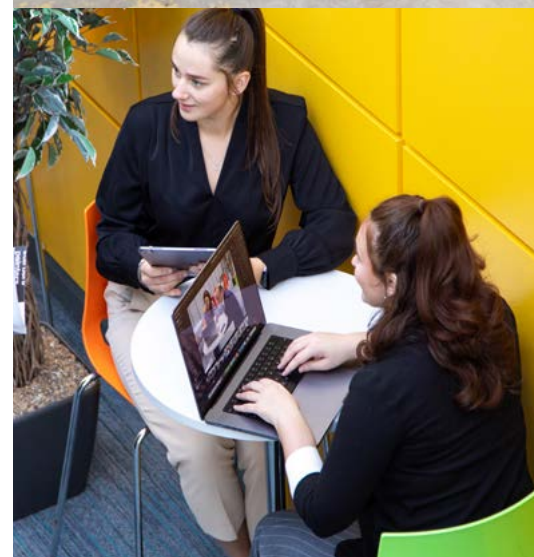
**Level 2 Traineeship in Art & Design**  
Bangor, Downpatrick, Lisburn



## BEAUTY & HOLISTIC THERAPIES

Code: P11182

**Level 2 Traineeship in Beauty Therapy**  
Bangor, Downpatrick, Lisburn



## BIO SCIENCES

Code: P11190

**Level 2 Traineeship in Applied Science**  
Bangor, Downpatrick, Lisburn

## BRICKLAYING

Code: P10763

**Level 2 Traineeship in Bricklaying**  
Newtownards

## BUSINESS & MANAGEMENT

Code: P10781

**Level 2 Traineeship in Retail**  
Downpatrick, Lisburn, Newtownards

Code: P11188

**Level 2 Traineeship in Business**  
Bangor, Lisburn

## CARPENTRY & JOINERY

Code: P10764

**Level 2 Traineeship in Carpentry & Joinery**  
Downpatrick, Lisburn, Newtownards





## COMPUTING/SOFTWARE ENGINEERING/NETWORKING

Code: P11102

**Level 2 Traineeship in Information Technology**  
Bangor, Downpatrick, Lisburn, Newtownards



## CONSTRUCTION STUDIES

Code: P11191

**Level 2 Traineeship in Maintenance Operations (Construction)**  
Downpatrick, Lisburn, Newtownards



## EARLY YEARS

Code: P11108

**Level 2 Traineeship in Children's Care, Learning & Development**  
Lisburn, Newtownards

## ELECTRICAL INSTALLATION

Code: P10771

**Level 2 Traineeship in Electrical**  
Downpatrick, Lisburn, Newtownards



## ENGINEERING

Code: P10772

**Level 2 Traineeship in Engineering**  
Bangor, Downpatrick, Lisburn, SERC Professional Skills Centre



## HAIRDRESSING

Code: P10773

**Level 2 Traineeship in Hairdressing**  
Bangor, Downpatrick, Lisburn

Code: P11184

**Level 2 Traineeship in Barbering**  
Bangor, Lisburn



Code: P11187

**Level 2 Traineeship in Hair & Media Make-Up**  
Bangor, Lisburn

## HEALTH & CARE

Code: P11107

**Level 2 Traineeship in Health & Social Care**  
Lisburn, Newtownards



## HOSPITALITY & CATERING

Code: P10766

**Level 2 Traineeship in Professional Chef**  
Bangor, Downpatrick, Lisburn, Newtownards





34



Code: P11189

**Level 2 Traineeship in Professional Bakery**

**Bangor, Lisburn**

Code: P10813

**Level 2 Traineeship in Hospitality & Tourism Team Member  
(Food & Beverage Service)**

**Bangor, Downpatrick, Lisburn**

## MEDIA

Code: P11185

**Level 2 Traineeship in Creative Media Skills**

**Bangor, Downpatrick, Lisburn**

## MOTOR VEHICLE

Code: P10784

**Level 2 Traineeship in Vehicle Maintenance & Repair  
(Heavy Vehicle)**

**Lisburn**

Code: P10785

**Level 2 Traineeship in Vehicle Maintenance & Repair  
(Light Vehicle)**

**Downpatrick, Lisburn, Newtownards**

Code: P10776

**Level 2 Traineeship in Land Based Engineering**

**Lisburn**

Code: P10770

**Level 2 Traineeship in Construction Plant Maintenance**

**Lisburn**



35

## MUSIC

Code: P11186

**Level 2 Traineeship in Music**

**Bangor, Lisburn**

## PLASTERING

Code: P10777

**Level 2 Traineeship in Plastering**

**Lisburn**

## PLUMBING

Code: P10778

**Level 2 Traineeship in Plumbing**

**Downpatrick, Lisburn, Newtownards**

## SPORT & RECREATION

Code: P11192

**Level 2 Traineeship in Sport**

**Bangor, Downpatrick, Lisburn**

## TRAVEL & TOURISM

Code: P11106

**Level 2 Traineeship in Travel & Tourism**

**Bangor, Downpatrick, Lisburn**



# APPRENTICESHIPS

## WHAT IS AN APPRENTICESHIP?

**As an apprentice, you will be employed at a Northern Ireland-based company, working with experienced staff to learn new skills.**

An apprentice also receives 'off-the-job' training, usually on a day-release basis with a training provider such as SERC, to work towards achieving vocational qualifications and alongside this, if necessary, Essential Skills qualifications (reading, writing, maths).

SERC will meet with you and your employer to discuss your training needs and will then develop a training programme for you. We will be with you every step through your apprenticeship to support you and make sure you are making progress. Usually, you are with the employer four days a week and at SERC one day a week. You are paid for a full week, including the day at college.

## DID YOU KNOW?

The apprenticeships programme offers training across a range of industries and businesses.

Apprenticeships are open to any age group, and some can be delivered and assessed wholly in the workplace.



“

**I really like going to work as an apprentice – I enjoy it even more than I thought I would. I like being able to go out and work most of the week and then come into SERC once a week to help get my qualifications, which will help me further myself in my work.**

”

**Cady McFarlane**  
Level 3 Apprenticeship NI in Engineering



# APPRENTICESHIP OPPORTUNITIES AT SERC

- BIO SCIENCES
- BRICKLAYING
- CARPENTRY & JOINERY
- CONSTRUCTION STUDIES
- EARLY YEARS
- ELECTRICAL INSTALLATION
- ENGINEERING
- FIRE & SECURITY
- HAIRDRESSING
- HEALTH & CARE
- HOSPITALITY & CATERING
- MOTOR VEHICLE
- PLASTERING
- PLUMBING
- REFRIGERATION & AIR CONDITIONING



[serc.ac.uk/apprenticeships](https://serc.ac.uk/apprenticeships)

Click to view all apprenticeship courses



“

SERC offers expert and talented teachers. If you're ever struggling, you're provided with the help and resources you need to complete your written and practical work. I have recommended the college to my girlfriend and she is exploring her options for next year.

”

**Rafael Lorf**

Level 3 Apprenticeship in Manufacturing Engineering



# APPRENTICESHIP COURSES



## BIO SCIENCES

Code: P10645

**Level 3 Apprenticeship NI in Pharmacy Services**  
**Holywood**

Code: P10845

**Level 2 Apprenticeship NI in Pharmacy Services**  
**Holywood**



## BRICKLAYING

Code: P10055

**Level 2 Apprenticeship NI in Bricklaying**  
**Newtownards**

Code: P10056

**Level 3 Apprenticeship NI in Bricklaying**  
**Newtownards**

## CARPENTRY & JOINERY

Code: P10079

**Level 2 Apprenticeship NI in Carpentry & Joinery**  
**Downpatrick, Lisburn, Newtownards**

Code: P10080

**Level 3 Apprenticeship NI in Carpentry & Joinery**  
**Downpatrick, Lisburn, Newtownards**



## CONSTRUCTION STUDIES

Code: P10107

**Level 3 Apprenticeship NI in Civil Engineering**  
**Lisburn**



## EARLY YEARS

Code: P10751

**Level 2 Work Based Apprenticeship in Childcare**  
**Off Site**

Code: P10752

**Childcare - Work Based Apprenticeship (Level 3)**  
**Off Site**

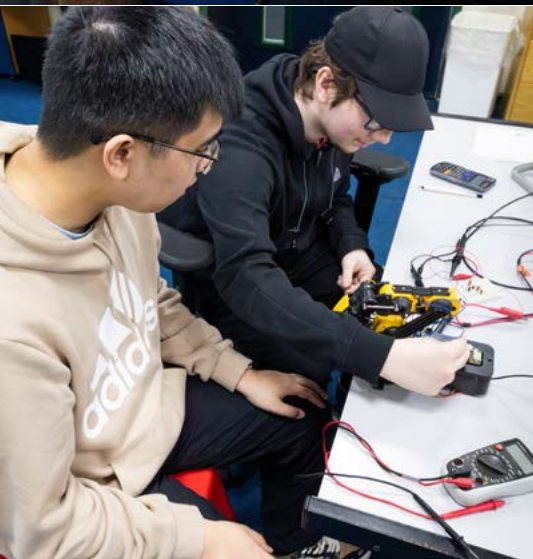


## ELECTRICAL INSTALLATION

Code: P10140

**Level 3 Apprenticeship NI in Electrical Installation**  
**Downpatrick, Lisburn, Newtownards**





# ENGINEERING

Code: P10145

**Level 2 Apprenticeship NI in Engineering (Manufacturing)**  
**Bangor, Downpatrick, Lisburn**

Code: P10146

**Level 3 Apprenticeship NI in Engineering (Manufacturing)**  
**Bangor, Downpatrick, Lisburn**

Code: P10657

**Level 3 Apprenticeship NI in Polymers**  
**Lisburn**

Code: P11216

**Level 2 Apprenticeship NI in Rail Engineering**  
**Downpatrick**

Code: P11244

**Level 2 Apprenticeship in Engineering**  
**(Fabrication & Welding)**  
**SERC Professional Skills Centre**

Code: P11249

**Level 3 Apprenticeship NI in Engineering**  
**(Electrical/Mechatronics)**  
**Bangor, Lisburn**

Code: P11251

**Level 2 Apprenticeship NI in Engineering**  
**(Electrical/Mechatronics)**  
**Bangor, Lisburn**

Code: P10152

**Level 3 Apprenticeship NI in Engineering**  
**(Fabrication & Welding)**  
**Bangor, SERC Professional Skills Centre, Lisburn**



# FIRE & SECURITY

Code: P10682

**Level 3 Apprenticeship NI in Fire & Security Systems**  
**Lisburn, Newtownards**

# HAIRDRESSING

Code: P10179

**Level 2 Apprenticeship NI in Hairdressing**  
**Bangor, Downpatrick, Lisburn**

Code: P10180

**Level 3 Apprenticeship NI in Hairdressing**  
**Bangor, Downpatrick, Lisburn**

# HEALTH & CARE

Code: P10754

**Level 2 Work Based Apprenticeship in Health & Social**  
**Care**  
**Off Site**

Code: P10755

**Level 3 Work Based Apprenticeship in Health & Social**  
**Care**  
**Off Site**





# HOSPITALITY & CATERING

Code: P10082

**Level 2 Apprenticeship NI in Professional Cookery**  
**Bangor, Downpatrick, Lisburn**

Code: P10083

**Level 3 Apprenticeship NI in Professional Cookery**  
**Bangor, Downpatrick, Lisburn**

Code: P10086

**Catering - Work Based Apprenticeship (Professional Cookery) (Level 2)**  
**Off Site**

Code: P10203

**Level 2 Work Based Apprenticeship in Hospitality (Food & Beverage Service)**  
**Off Site**

Code: P10207

**Hospitality - Work Based Apprenticeship (Kitchen Services) (Level 2)**  
**Off Site**

Code: P10208

**Hospitality - Work Based Apprenticeship (Supervision & Leadership) (Level 3)**  
**Off Site**

Code: P10758

**Food & Drink - Work Based Apprenticeship Certificate in Food Industry Skills (Level 2)**  
**Off Site**

Code: P10760

**Level 2 Work Based Apprenticeship in Food & Drink (Food Team Leading)**  
**Off Site**



Code: P10761

**Food & Drink - Work Based Apprenticeship Certificate in Food Management (Level 3)**  
**Off Site**

# MOTOR VEHICLE

Code: P10711

**Level 2 Apprenticeship NI in Vehicle Maintenance & Repair (Heavy Vehicle)**  
**Lisburn**

Code: P10714

**Level 2 Apprenticeship NI in Vehicle Maintenance & Repair (Light Vehicle)**  
**Downpatrick, Lisburn, Newtownards**

Code: P10712

**Level 3 Apprenticeship NI in Vehicle Maintenance & Repair (Heavy Vehicle)**  
**Lisburn**

Code: P10715

**Level 3 Apprenticeship NI in Vehicle Maintenance & Repair (Light Vehicle)**  
**Downpatrick, Lisburn, Newtownards**

Code: P10121

**Level 2 Apprenticeship NI in Construction Plant Maintenance**  
**Lisburn**

Code: P10253

**Level 2 Apprenticeship NI in Land Based Engineering**  
**Lisburn**





Code: P10122

**Level 3 Apprenticeship NI in Construction Plant Maintenance**

**Lisburn**

Code: P10255

**Level 3 Apprenticeship NI in Land Based Engineering**

**Lisburn**



## PLASTERING

Code: P10649

**Level 3 Apprenticeship NI in Plastering**

**Lisburn**

Code: P10650

**Level 2 Apprenticeship NI in Plastering**

**Lisburn**



Code: P11034

**Level 2 Apprenticeship NI in Wall & Floor Tiling**

**Lisburn**

## PLUMBING

Code: P10652

**Level 2 Apprenticeship NI in Plumbing**

**Downpatrick, Lisburn, Newtownards**

Code: P10653

**Level 3 Apprenticeship NI in Plumbing**

**Downpatrick, Lisburn, Newtownards**



## REFRIGERATION & AIR CONDITIONING

Code: P10028

**Level 3 Apprenticeship NI in Air Conditioning**

**Lisburn**

Code: P10669

**Level 3 Apprenticeship NI in Refrigeration**

**Lisburn**

Code: P10670

**Level 2 Apprenticeship NI in Refrigeration & Air Conditioning**

**Lisburn**



“

I am very hands-on, and learn best by doing. I always say with the apprenticeship you really are learning something new every day. I have never had an issue being female in what is perceived as a male dominated industry - work is busy so everyone just gets on with the task at hand. We are all professionals.

”

**Victoria McIlroy**  
Apprenticeship NI Level 3 in  
Electrical Installation





# WHY

## STUDY AT SERC?





# YOUR PROGRAMME FOR LEARNING

**Your Further Education study programme (course) will include several elements. Each study programme will be unique to your individual needs, designed to support your career ambitions.**

## VOCATIONAL QUALIFICATION

Your vocational qualification will make up the greater part of your study programme. The qualification will be a mix of practical and theory which will enhance your understanding of the subject.

## ENGLISH AND MATHS

If you do not have a GCSE grade C or above in English and /or Maths, you will work towards achieving an Essential Skills qualification in these subjects. These will be built into your timetable and are recognised by employers and by some universities.

## WORK EXPERIENCE

You will undertake practical work experience and work-related learning, related to the vocational area of the study programme. This will develop your employability skills and apply your learning in real life situations.

## ADDITIONAL ACTIVITIES

Your programme will also include other activities designed to support and help you develop the job-related skills, experience and confidence required to progress to employment or Higher Education. These can include tutorials, field trips and volunteering opportunities.

## ONLINE STUDY

During the full lockdown in 2020, SERC successfully moved online and remained open for business. This experience proved that students can develop good study habits, it reinforced digital skills and it developed confidence in independent work. SERC wants to build on that success and so we still include an element of online learning as part of our courses.

You will also be expected to study for some hours each week outside college class time to complete assignments. Support will always be available to guide your learning and to help you achieve your goals.







# THE STUDENT EXPERIENCE

- We have industry-experienced, qualified tutors and state-of-the-art facilities.
- Learning is rooted in meeting practical challenges and working on projects to develop teamwork and self-management skills
- Courses include work placements, and in some cases offer work experience abroad.

# REAL SKILLS FOR REAL LIFE

At SERC, we know it's important to educate the whole person, which means we don't just deliver paper qualifications; we develop rounded individuals with the personal and interpersonal skills needed to navigate life. We know, too, that these skills are valued by employers.

**Transversal skills (T-skills)** are behaviours and skills which help a student learn other skills and gain knowledge. T-skills include critical thinking, teamwork, creativity, problem-solving, time management and learning skills. SERC puts these at the centre of the educational experience to build confidence and prepare our students for the challenges of modern life and work.

“

The best part of the course is the teaching. It feels like we are being taught one to one, even though there are other people in the class, it feels like they are just talking to you – all the lecturers are amazing.

”

**Patrick Gordon**

Level 3 Advanced Tech in Applied Science





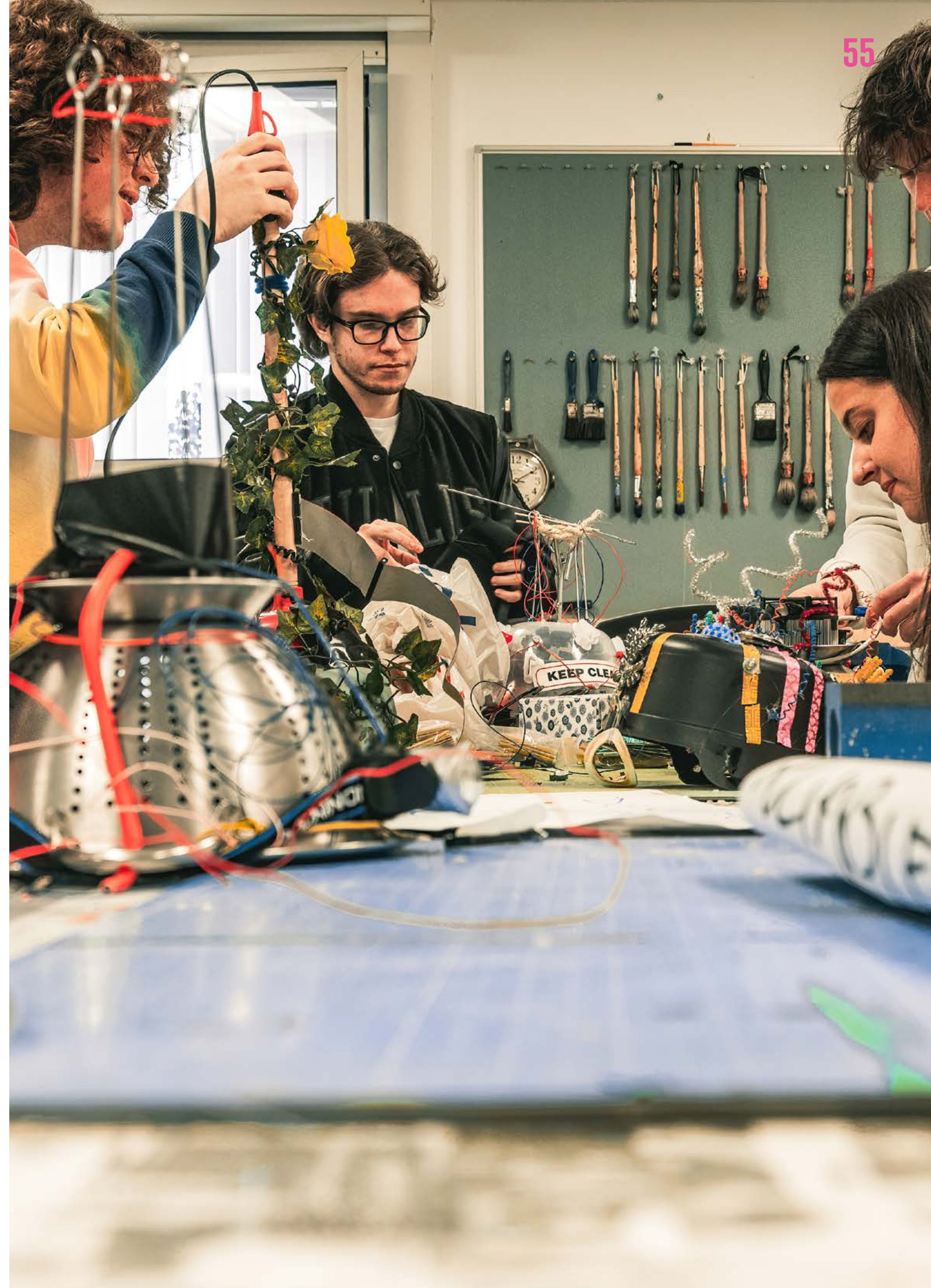
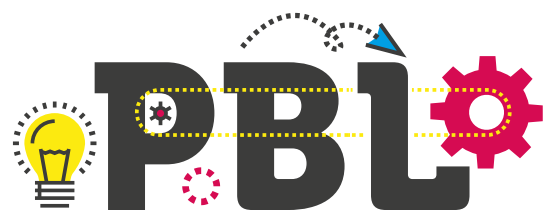
# PROJECT BASED LEARNING (PBL)

**Project-based learning (PBL) is used across all vocational areas at SERC and will prepare you for the world of work by developing the right skills, attitudes and behaviours, while having fun and learning along the way.**

PBL is a student-centred approach which students find more enjoyable and satisfying - and students with PBL experience rate their abilities more highly.

PBL uses industry-focused projects to enhance your learning. You will study in small groups, learn from each other and develop skills in an engaging way. This approach helps develop important teamwork and communication skills.

PBL encourages learning from experience, drawing on what has been learnt to understand problems, allowing for different approaches and learning styles.





# GET INVOLVED!

## STUDENTS' UNION

SERC Students' Union (SU) advocates for SERC students and also delivers a programme of events and activities to enrich and enhance college life for the SERC community. All students are automatically members of the SU and can stand for office such as class representative, or welfare officer. If you can't find a club or society at SERC which reflects your interests, the SU will support you in starting one! **Click here to find out more.**

## GO GREENER!

SERC was awarded the prestigious Green Gown Award for our commitment to promoting sustainability. Students and staff are invited to get involved in progressing this commitment through eco communities and involvement in projects. **Click here to find out more.**

## STUDENT BUSINESSES

SERC provides a range of activities through which you can develop enterprise skills. All full-time students spend the first two weeks of the academic year developing enterprise ideas. There are also dedicated workspaces for students to develop their ideas, and a team supporting students to establish their own business. **Click here to find out more.**





# STUDENT SUPPORT

**SERC is committed to supporting all students to meet challenges and achieve their aims. The College has an extensive network of support services and also works with a range of agencies to make sure help is there whenever it is needed.**

## Pastoral Care

We work with Ascert, Aware, Inspire and the HSC to help you to overcome challenges and achieve your goals.

## Learning Support

If you have additional needs, we have the facilities and staff to work with you to help you succeed.

## Student Finance

It can be difficult to juggle your finances when you're a student. SERC publishes a range of guides and has a team of advisors to support you.

## Careers

Our award-winning careers advisors can help you plan your path to achieving your ambitions.

## Student Carers

If you have caring responsibilities at home, we understand that this can have an impact on your learning. We have a dedicated support service to offer help and advice.

## Learning Resource Centres

If you need a place to study or help in finding resources to support your learning, we have Learning Resource Centres on each main campus with printed books and e-books and quiet study areas.





# INTERNATIONAL TRAVEL

The UK Government's Turing Scheme offers SERC students an opportunity to work or study anywhere in the world. During the 2023-24 academic year, more than 80 students from 10 curriculum areas travelled to various countries in Europe or to South Africa. This fully-funded work placement helps to improve technical and professional skills, cultural awareness and language ability. Gaining work experience abroad will help boost your self-confidence, independence and improve your employability prospects, giving your CV an extra edge.

- **All travel, visas and insurance**
- **All accommodation and meals Cultural activities**
- **Suitable work placement and support from your tutors.**

## HOW TO GET INVOLVED

A recruitment process will take place during autumn 2025, through which suitable candidates will be selected. Selected students will need current travel and health documentation. More information will be provided by your tutor.





# HOW TO APPLY IN FOUR EASY STEPS



# 1

## STEP 1 APPLY

Visit [www.serc.ac.uk](http://www.serc.ac.uk) and select a course to start the application process. You can also click on the course title in this prospectus to be taken to the course on our website. You can apply for up to three different full-time courses.

# 2

## STEP 2 PRE-ENTRY ADVICE AND GUIDANCE SESSIONS

We'll invite you to attend a mandatory pre-entry advice and guidance session with the subject tutor - it's a great chance to talk about the course and discuss how it can help you achieve the career you want.

# 3

## STEP 3 EVALUATION OPPORTUNITY

Our admissions process may include an evaluation opportunity that allows us to consider skills beyond academic achievement. This might include, for example, an audition, portfolio submission or a practical task.

# 4

## STEP 4 ENROL!

Providing all entry requirements are met, you will be given a conditional offer for your chosen course. When you get the results for any qualifications needed, you can enrol.



- If you already have the grades and meet all entry requirements, you will be able to enrol immediately.
- To enrol, you will need evidence of results and proof of ID i.e. Passport, Driving Licence, National ID Card or National Insurance Card.
- If you don't get the results you need, please don't panic. We will be right here to help you look at all your options.



# REAL LEARNING AT SERC

Apply Now for courses starting in 2025/26



Click to visit our social media sites

