



PART-TIME PROSPECTUS 25-26

REAL LEARNING



BANGOR | DOWNPATRICK | LISBURN | NEWTOWNARDS



CONTENTS

Welcome	4
Part-Time Education at SERC	6
Entry Requirements	8
Fees and Finance	10
Further Education AT SERC	12
Further Education Courses	14
Higher Education at SERC	30
Higher Education courses	32
Higher Level Apprenticeships at SERC	38
Higher Level Apprenticeship courses	40
Returning to Learning	44
Student Support	46
WHY SERC?	48
Applying and enrolling	49

We strive to ensure the description of courses in this prospectus and on our website is accurate. However, for various reasons there may be occasions when the college may need to change arrangements, or be unable to deliver classes due to circumstances such as reduced funding. If there are insufficient numbers applying for a course, it may not be viable to deliver the class.

WELCOME

Welcome to SERC, Northern Ireland's top-performing college. We are delighted that you are considering part-time study at SERC, where we offer real learning for real life. As a part-time student, you'll have the same access to state-of-the-art facilities, expert tuition, and extensive support services as our full-time students, with the added flexibility which allows you to fit study around work and personal commitments.

SERC part-time courses offer professional qualifications which can support career progression, not only providing skills and increased knowledge but also demonstrating a commitment to succeed within your industry.

You can also enrol on leisure courses in a range of areas including arts, cookery, languages and horticulture. These may be pursued for fun, or they can lead to accredited programmes, offering the possibility of turning a hobby into a career.

We have something for everyone, whatever stage of your education and whatever your age or background. Browse our prospectus, explore our website, and come and talk to us at an open evening to find out more about the real advantages of studying part-time at SERC.

Tommy Martin

Principal and Chief Executive



PART-TIME EDUCATION AT SERC

WHAT WE OFFER

Thousands of people each year choose SERC for a part-time course, studying any of a broad range of subjects. Part-time learning can improve your career prospects with new skills and additional qualifications, or it can bring enjoyment and new interest through a leisure course. It can ease you back into education through an essential skills course in Maths or English, and it can introduce English to speakers of other languages.

The courses within this prospectus are categorised by level:

Further Education courses (levels 1-3) include leisure courses, Diplomas, NVQs and Certificates.

Higher Education courses (levels 4-6) include Degrees, Foundation Degrees, HNDs and HNCs. Higher-Level Apprenticeships are also available where your employer will pay for you to attend college and gain your qualification.

We also deliver Essential Skills through FREE courses in Maths and English to help you brush up on the basics, or gain a recognised qualification.



“

I am enjoying learning again. I feel we have a lovely wee class; everyone's supportive and the tutors are so helpful. I look forward to college day each week. I would say to anyone: go for it, go back to education; you can study at any age. It's different when you are older.

”

Kirsty Gilmore

Higher Level Apprenticeship in Health and Social Care

ENTRY REQUIREMENTS

Your chosen course may have specific entry requirements so please check the full details on the website course listing.

If you have disabilities or learning difficulties, you may not need to meet some entry requirements - our Learning Support Team can advise you.

Call 0345 600 7555 for further advice.

ENTRY LEVEL SKILLS FOR LIFE AND WORK.

Entry Requirements
No formal qualifications required.

Where it can take you
Progress to Level 1 study.

LEVEL 1 BTECS, AWARDS, CERTIFICATES, DIPLOMAS, NVQS, SKILLS FOR LIFE AND WORK.

Entry Requirements
No formal qualifications required.

Where it can take you
Progress to Level 2 study or use skills to start work.

LEVEL 2 APPRENTICESHIPS AND TRAINEESHIPS.

Equivalent
GCSEs.

Entry Requirements
4 GCSEs at grades D-G including English and Maths at grade F or higher or equivalent. Enhanced criteria in Maths and English may also apply, refer to individual course descriptions for details.
Accreditation for Prior Experiential Learning (APEL) may also be considered.

Where it can take you
Progress to Level 3 study or use skills to start work.

LEVEL 3 BTECS, DIPLOMAS, APPRENTICESHIPS AND ACCESS TO EDUCATION.

Equivalent
A Levels.

Entry Requirements
5 GCSEs at Grades C/4 or above including English Language and/or Maths (some courses may require both, please check your individual course). Or successful completion of a Level 2 related qualification and interview.

Where it can take you
Progress to Higher Education at SERC or at university, or use your skills to start work.

LEVEL 4 HIGHER NATIONAL CERTIFICATES (HNCS), HIGHER LEVEL APPRENTICESHIPS

Equivalent
1st year of a Bachelor's Degree

Entry Requirements
5 GCSEs at Grades C/4 or above including English Language and Maths (or equivalent). A Levels or successful completion of related Level 3 qualification or related industry experience. Interview.

Where it can take you
Progress to Higher Education at SERC, university or use your skills to start work

LEVEL 5 HIGHER NATIONAL DIPLOMAS (HNDS), FOUNDATION DEGREES, HIGHER LEVEL APPRENTICESHIPS

Equivalent
2nd year of a Bachelor's Degree

Entry Requirements
Successful completion of Level 4 related qualification or related industry experience, and an interview.

Where it can take you
Progress to university or use your skills to start work

LEVEL 6 BACHELOR'S DEGREE

Entry Requirements
Successful completion of Level 5 related qualification or related industry experience, and an interview.

Where it can take you
Continue to Master's or use your skills to start work

FEES AND FINANCE

Fees are payable at the point of enrolment for most part-time courses. The college does offer some free courses e.g. Essential Skills.

The full fee quoted includes tuition, registration, and exam fee (if applicable). Some courses may have an additional fee (for example, for materials, uniforms, and other items). Information on such fees can be found at the bottom of course descriptors on the SERC website.

You may be able to access financial support in the form of a grant or loan, or you may be eligible for a concessionary fee and/or payment by instalments. Please note that concession rates are applied to the tuition element of the fee, not the full fee.



“

I would recommend the course to anyone who enjoys a challenge. I have found the support of my tutors, fellow classmates and colleagues in my workplace, key elements in helping me to succeed in the course. Overall, it has been a great pathway for learning and developing knowledge and skills.

”

Adam McClean

Level 3 Diploma in the Principles and Practice for Pharmacy Technicians

FURTHER EDUCATION AT SERC

WHAT IS FURTHER EDUCATION?

Further Education (FE) courses are open to all. They are suitable for students aged 16 and over and include Diplomas, Extended Diplomas and Certificates. This section also includes leisure courses and courses aimed at adults returning to education to achieve basic qualifications, including essential skills.

- ACCESS TO HE
- ART & DESIGN
- BEAUTY & HOLISTIC THERAPIES
- BIO SCIENCES
- BRICKLAYING
- BUSINESS & MANAGEMENT
- CARPENTRY & JOINERY
- COMPUTING/SOFTWARE
- ENGINEERING/NETWORKING
- CONSTRUCTION STUDIES
- EARLY YEARS
- ENGINEERING
- ESOL
- ESSENTIAL SKILLS
- GCSE
- HAIRDRESSING
- HEALTH & CARE
- HORTICULTURE
- HOSPITALITY & CATERING
- LANGUAGES
- MOTOR VEHICLE
- PHOTOGRAPHY
- PLUMBING
- SPORT & RECREATION
- TRAINING & DEVELOPMENT



“

I'm new to making ceramics and I've completely fallen in love with it. Our tutor is so knowledgeable about all the aspects of ceramics. You think it's quite simple looking at someone making ceramics, but in reality there are so many different skills involved and we learn to develop them all.

Kelly Donovan
Leisure Creative Ceramics

”

FURTHER EDUCATION COURSES



ACCESS TO HE

Code: P10672

Level 2 Restart Education

Ballynahinch, Bangor, Downpatrick, Lisburn, Newcastle, Newtownards

Code: P10923

Level 2 Restart Lite

Ballynahinch, Bangor, Downpatrick, Lisburn, Newcastle, Newtownards

ART & DESIGN

Code: P10261

Leisure Creative Ceramics

Bangor, Downpatrick, Lisburn

Code: P10268

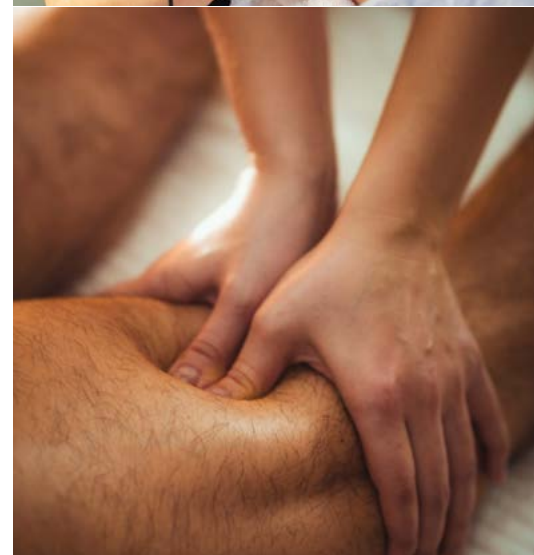
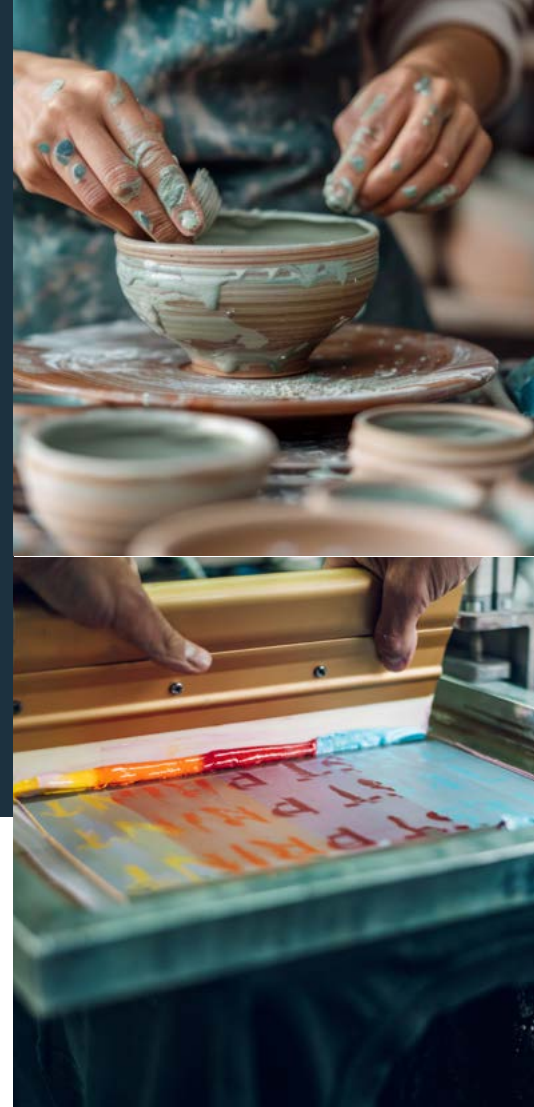
Leisure Upholstery and Soft Furnishings

Holywood

Code: P10607

Painting for Pleasure

Bangor, Downpatrick, Lisburn



Code: P10935

Level 2 Certificate in Creative Techniques in 3D - Ceramics

Bangor

Code: P11097

Level 3 Foundation Diploma in Ceramics

Bangor

Code: P10972

Level 2 Certificate in Creative Techniques in 2D - Print

Bangor

Code: P11272

Advanced Leisure Ceramics

Bangor

BEAUTY & HOLISTIC THERAPIES

Y10346BD1A

Level 2 NVQ Diploma in Nail Services

Y11276LEAA

Certificate in Lymphatic Drainage Massage

Code: P10381

Level 3 Award in Crystal Therapy

Lisburn

Code: P10410

Level 3 Certificate in Fashion and Photographic Make-Up

Lisburn

Code: P10816

Level 2 Diploma in Beauty Therapy Studies

Lisburn



Code: P11209

Level 2 Certificate in Nail Technology

Bangor, Downpatrick, Lisburn



Code: P10344

Level 2 NVQ Diploma in Beauty Therapy General

Bangor, Downpatrick

Code: P10413

Level 3 Certificate in Stone Therapy Massage

Lisburn

Code: P10417

Level 3 Certificate Indian Head Massage

Bangor, Lisburn

Code: P10445

Level 3 Diploma in Reflexology

Bangor, Lisburn



Code: P10428

Level 3 Diploma in Aromatherapy

Lisburn

Code: P10448

Level 3 Diploma in Sports Massage Therapy

Bangor, Lisburn

BIO SCIENCES

Code: P10827

Level 3 Diploma in the Principles and Practice for Pharmacy Technicians

Holywood

Code: P10936

Level 2 Certificate in the Principles and Practice for Pharmacy Support Staff

Holywood, Online



Code: P10818

Level 2 GCSE in Biology

Bangor, Downpatrick



BRICKLAYING

Code: P10135

DIY Brickwork

Newtownards

BUSINESS & MANAGEMENT

Code: P10031

Level 3 Award in Community Development

Online

Code: P10798

CMI Chartered Manager

Bangor



Code: P10925

Level 3 Foundation Certificate in People Practice

Bangor, Lisburn

CARPENTRY & JOINERY

Code: P10728

Woodwork Introduction

Lisburn, Newtownards





COMPUTING/SOFTWARE ENGINEERING/NETWORKING

Code: P10115

Level 3 Certificate in CompTIA A+

Bangor, Lisburn

Code: P10116

Computer Animation

Bangor

Code: P10150

**Level 2 International Certificate Digital Literacy (ICDL
Core)**

Bangor, Lisburn

Code: P10237

Introduction to Games Development

Bangor

Code: P10242

Introduction to Programming

Bangor, Lisburn

Code: P10471

**Level 3 National Extended Certificate in Information
Technology**

Bangor

Code: P11055

Level 2 GCSE Digital Technology (Programming)

Bangor

Code: P11248

Teens Introduction to Games Development

Bangor



CONSTRUCTION STUDIES

Code: P10433

Level 3 National Diploma in Civil Engineering

Lisburn

Code: P10434

**Level 3 Diploma in Civil Engineering for Technicians
(Institution of Civil Engineers)**

Lisburn

EARLY YEARS

Code: P10395

**Level 3 Award in Supporting Children and Young People's
Speech, Language and Communication**

Lisburn

Code: P10426

**Level 3 Diploma for Children's Care, Learning and
Development**

Downpatrick, Lisburn, Newtownards

ENGINEERING

Code: P10236

Introduction to Computer Aided Design (SolidWorks)

Lisburn

Code: P10549

Light Engineering and Decorative Metalwork

Bangor, Lisburn

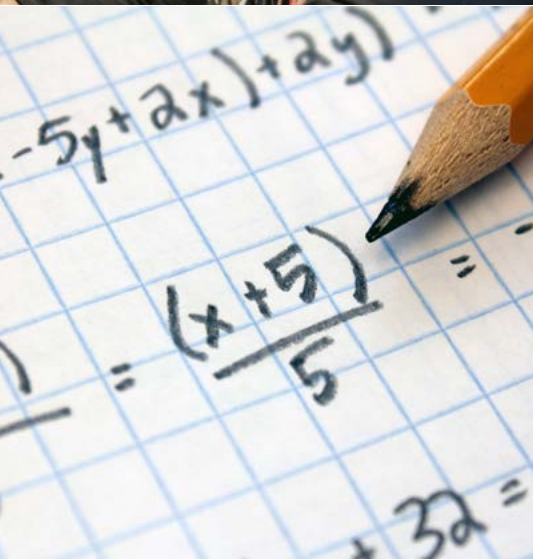


ESOL

Code: P10149

ESOL

**Bangor, Downpatrick, Fisherwick Presbyterian Church,
Lisburn, Newtownards**



ESSENTIAL SKILLS

Code: P10102

Certificate in Essential Skills - Literacy

Bangor, Downpatrick, Lisburn, Newtownards

Code: P10103

Certificate in Essential Skills - Numeracy

Bangor, Downpatrick, Lisburn, Newtownards



GCSE

Code: P10163

Level 2 GCSE in English Language

Bangor, Downpatrick, Lisburn

Code: P10164

Level 2 GCSE Mathematics

Bangor, Downpatrick, Lisburn



HAIRDRESSING

Code: P10314

Level 2 Certificate in Barbering

Bangor, Lisburn



Code: P10345

Level 2 NVQ Diploma in Hairdressing

Bangor, Lisburn

Code: P10496

Level 3 NVQ Diploma in Hairdressing

Downpatrick



Code: P10488

Level 3 NVQ Diploma in Barbering

Bangor

HEALTH & CARE

Code: P10405

Level 3 Certificate in Counselling Studies

Newtownards



Code: P10309

Level 2 Certificate in Counselling Skills

Newtownards

Code: P10326

**Level 2 Diploma in Health and Social Care (Adults)
(Northern Ireland)**

Downpatrick

Code: P10437

Level 3 Diploma in Health and Social Care (Adults)

Downpatrick





HORTICULTURE

Code: P10154

Floral Art

Bangor, Holywood, Newtownards



Code: P10263

Leisure Gardening

Ballynahinch, Holywood

Code: P10301

Level 2 Award in Organic Fruit and Vegetable Growing

Holywood

Code: P11027

Level 2 Award in Botanical Art

Holywood

Code: P11039

Level 2 Certificate in the Principles of Plant Growth and Development

Holywood

Code: P11041

Level 2 Award in Plant Knowledge

Holywood

Code: P11042

L2 Award in Gardening Skills

Holywood

Code: P11068

Level 2 Extended Certificate in Garden Design

Holywood



HOSPITALITY & CATERING

Code: P10034

Artisan Yeast Breads

Bangor, Lisburn



Code: P10039

Baking Breads and Tea Breads

Bangor, Lisburn



Code: P10075

Cakes Bakes and Treats

Bangor, Downpatrick, Lisburn

Code: P10151

European Cookery

Bangor, Downpatrick, Lisburn

Code: P10252

Junior Chef School

Bangor, Downpatrick, Lisburn



Code: P10505

Level 3 NVQ Diploma in Professional Cookery - Patisserie and Confectionery

Bangor, Lisburn

Code: P10606

Oriental Cookery

Lisburn



Code: P10692

Spanish Tapas and Rioja

Bangor

Code: P10697

Summer Barbecue

Bangor

Code: P10700

Taste of India

Bangor, Lisburn



Code: P10932
Level 2 Diploma in Professional Chef
Bangor, Downpatrick, Lisburn

Code: P11031
Level 2 Certificate in Professional Bakery
Bangor, Downpatrick, Lisburn

Code: P11096
Level 3 Diploma in Professional Chef
Bangor, Downpatrick, Lisburn

LANGUAGES

Code: P10033
Arabic for Beginners
Bangor, Lisburn

Code: P10043
Beginners French 1
Bangor, Downpatrick, Lisburn

Code: P10044
Beginners French 2
Bangor, Downpatrick, Lisburn

Code: P10045
Beginners Irish 1
Bangor, Downpatrick

Code: P10046
Beginners Irish 2
Bangor, Downpatrick

Code: P10047
Beginners Italian 1
Bangor, Downpatrick

Code: P10048
Beginners Italian 2
Bangor, Downpatrick



Code: P10049
Beginners Japanese 1
Bangor

Code: P10050
Beginners Japanese 2
Bangor

Code: P10051
Beginners Spanish 1
Downpatrick, Lisburn

Code: P10052
Beginners Spanish 2
Lisburn

Code: P10129
Advanced Japanese
Bangor

Code: P10166
Level 2 GCSE Spanish
Bangor, Online

Code: P10198
Holiday French
Bangor, Downpatrick, Lisburn

Code: P10199
Holiday Italian
Bangor, Lisburn

Code: P10200
Holiday Spanish
Bangor, Lisburn

Code: P10594
Level 2 Award in Spanish 1
Bangor

Code: P10595
Level 2 Certificate in Spanish 2
Bangor



Code: P10596

Level 3 Award in Spanish 3
Lisburn

Code: P10599

Level 3 Certificate in Spanish 6
Bangor

Code: P10789

Advanced French
Bangor

Code: P10801

Level 3 Award in Spanish 4
Bangor

Code: P11036

Advanced Italian
Bangor

Code: P11059

Advanced Spanish
Bangor, Downpatrick

Code: P11154

Intermediate Italian
Bangor

Code: P11238

Holiday Portuguese
Bangor, Lisburn

Code: P11259

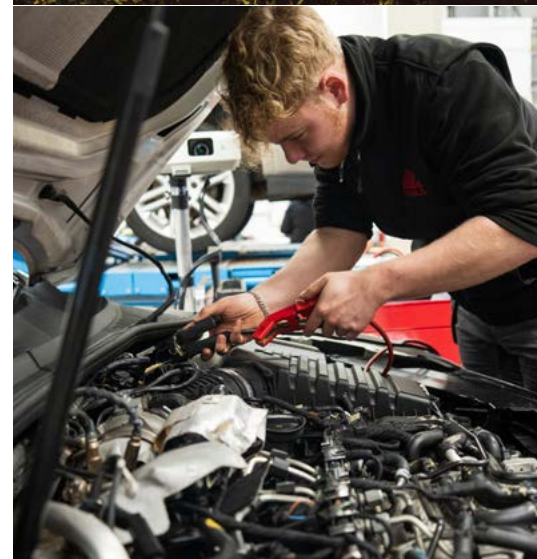
Level 1 Certificate in Spanish 1
Bangor

Code: P10573

Level 2 Certificate in French 2
Bangor

Code: P11268

Mandarin for Beginners 2
Bangor, Lisburn



Code: P10108

Mandarin for Beginners 1
Bangor, Lisburn

Code: P10583

Level 2 Certificate in Italian 2
Bangor

Code: P11230

Level 1 Award in Spanish 1
Bangor, Downpatrick, Lisburn

Code: P11258

Level 1 Award in French 1
Bangor

Code: P11269

Level 1 Award in Irish 1
Bangor, Downpatrick

MOTOR VEHICLE

Code: P10076

Car Maintenance
Newtownards

PHOTOGRAPHY

Code: P10262

Leisure Digital Photography
Bangor, Lisburn



PLUMBING

Code: P10040

Basic Boiler Maintenance (Oil)

Lisburn, Newtownards



SPORT & RECREATION

Code: P11026

Level 2 Certificate in Gym Instructing

Bangor, Lisburn

Code: P11177

Level 3 Diploma in Personal Training

Lisburn



TRAINING & DEVELOPMENT

Code: P10382

Level 3 Award in Education and Training (6502-32)
(formerly known as PTTLS)

Online

Code: P10401

Level 3 Award in Working with Children and Young People
with Special Needs

Bangor



Code: P10407

Level 3 Certificate in Assessing Vocational Achievement

Bangor

Code: P10934

Level 3 Certificate in Supporting Teaching and Learning
Ballynahinch, Bangor, Downpatrick, Lisburn, Newcastle,
Newtownards, Online



“

The Level 3 Pharmacy Technician course at SERC is helping me become a fully qualified pharmacy technician... and helps me better understand the advice we give to patients – such as the importance of timing or avoidance of specific foods and other drugs.

”

Rebekah Boyd

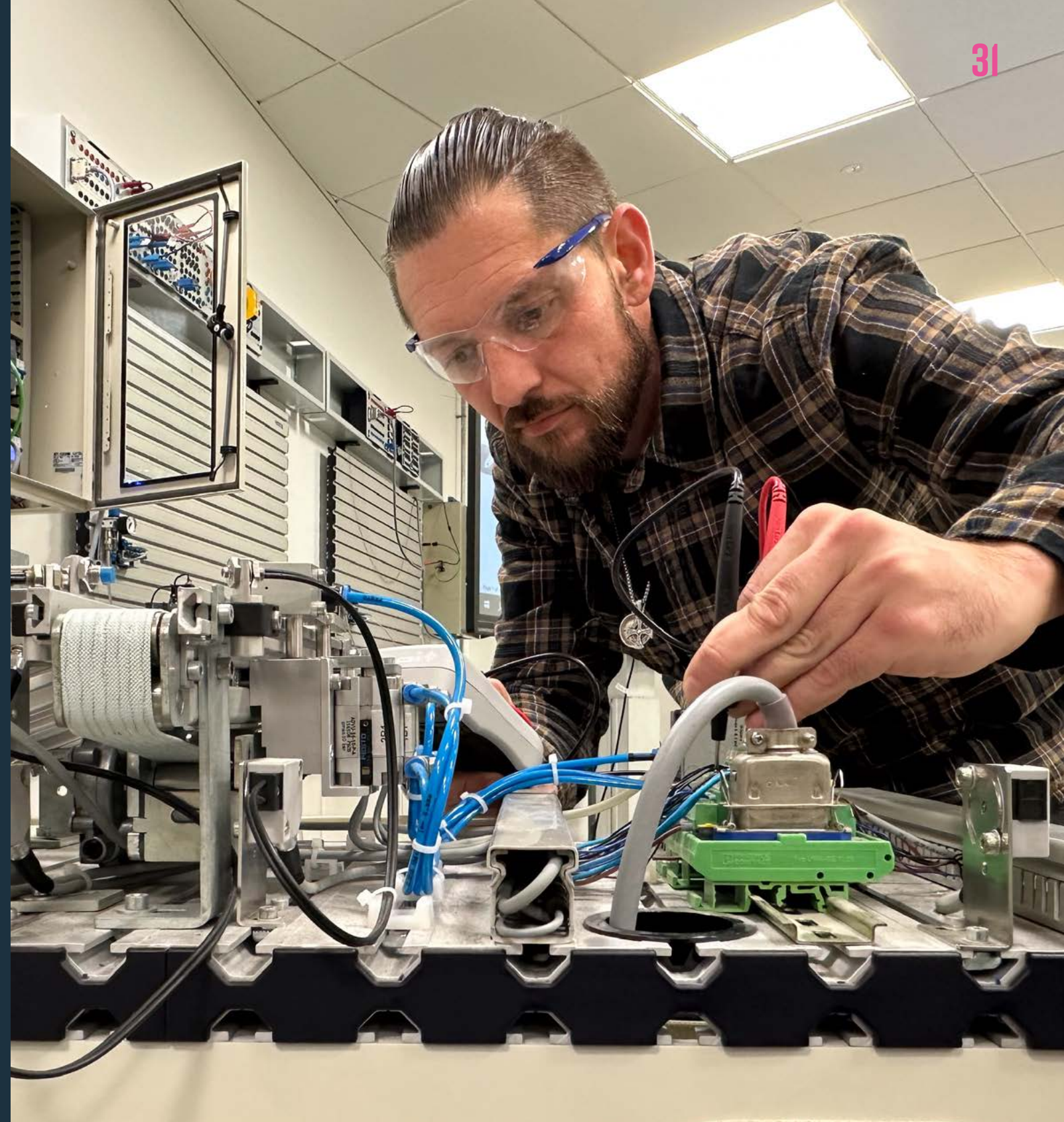
Level 3 Diploma in the Principles and Practice for Pharmacy Technicians

HIGHER EDUCATION AT SERC

WHAT IS HIGHER EDUCATION?

We offer degrees, foundation degrees, Higher National Diplomas (HNDs) and Higher National Certificates (HNCs). SERC also provides postgraduate-level qualifications and professional development qualifications which are accredited by professional industry bodies. We celebrate our Higher Education students' achievements at an annual graduation ceremony at the Waterfront Hall in Belfast. The SERC pathway to a Higher Education qualification in many cases allows you to move between part-time and full-time study at the end of a year, enabling you to succeed whilst meeting other commitments. For information on the Higher-Level Apprenticeship route, see page 38.

- ANIMAL CARE
- BEAUTY & HOLISTIC THERAPIES
- BIO SCIENCES
- BUSINESS & MANAGEMENT
- COMPUTING/SOFTWARE ENGINEERING/NETWORKING
- CONSTRUCTION STUDIES
- EARLY YEARS
- ENGINEERING
- HEALTH & CARE
- HOSPITALITY & CATERING



“

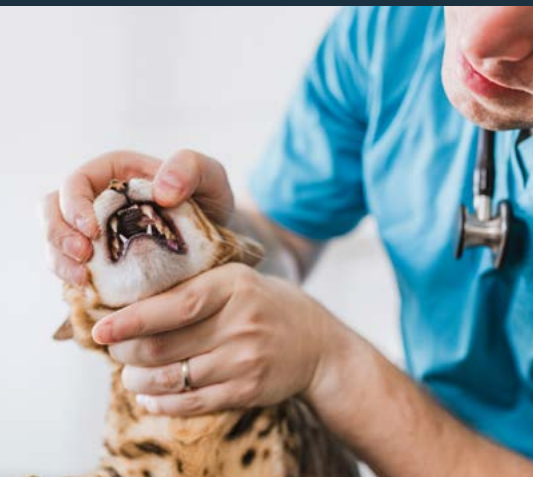
You get to train on the equipment that is used in industry. The course is very versatile and covers mechatronics, the internet of things, programmable logic controllers - I would absolutely recommend SERC - I think it's the best all-round course for modern industry.

”

Ryan Boyd

Foundation Degree in Industry 4.0 (Validated by the Open University)

HIGHER EDUCATION COURSES



ANIMAL CARE

Code: P10811

Pearson BTEC HNC in Animal Management
Bangor, Lisburn



BEAUTY & HOLISTIC THERAPIES

Code: P10807

VTCT (ITEC) Level 4 Diploma in Spa and Salon Management
Downpatrick



Code: P10725

VTCT Level 4 Diploma in Reflexology for the Complementary Therapist
Lisburn

Code: P10722

VTCT Level 4 Certificate in Sports Massage Therapy
Lisburn

Code: P10726

VTCT Level 5 Certificate in Sports Massage Therapy
Lisburn

BIO SCIENCES

Code: P10612

Pearson BTEC HNC in Applied Sciences
Bangor, Downpatrick, Lisburn



BUSINESS & MANAGEMENT

Code: P10924

CIPD Level 5 Associate Diploma in People Management
Bangor, Lisburn



Code: P10036

ATI Level 4 Certificate for Accounting Technicians
Bangor, Lisburn

Code: P10037

ATI Level 5 Diploma for Accounting Technicians
Bangor, Lisburn

Code: P10855

Management Development Programme (MDP)
Online



Code: P10942

CIPD Level 7 Advanced Diploma in Strategic People Management
Online



COMPUTING/SOFTWARE ENGINEERING/NETWORKING

Code: P11001

Foundation Degree in Cyber Security and Digital Forensics (Validated by The Open University)

Bangor, Lisburn

Code: P11002

Foundation Degree in Cloud Computing Technologies (Validated by The Open University)

Bangor

Code: P11003

BSc (Hons) in Cyber Security and Digital Forensics (Validated by The Open University)

Bangor, Lisburn

Code: P11004

BSc (Hons) in Cloud Computing Technologies (Validated by The Open University)

Bangor, Lisburn

Code: P10634

Pearson BTEC HNC in Computing

Bangor, Lisburn

CONSTRUCTION STUDIES

Code: P10613

Pearson BTEC HNC in Construction Management

Bangor, Lisburn

Code: P10614

Pearson BTEC HNC in Building Services Engineering

Bangor

Code: P10635

Pearson BTEC HNC in Civil Engineering

Lisburn

EARLY YEARS

Code: P10665

Foundation Degree in Early Childhood Studies (Validated by Queen's University Belfast)

Newtownards

Code: P10073

CACHE Level 5 Diploma in Leadership for Children's Care, Learning and Development (Management)

Bangor, Downpatrick, Lisburn

ENGINEERING

Code: P10616

Pearson BTEC HNC in Engineering (General)

Bangor, Lisburn

Code: P10619

Pearson BTEC HND in Engineering (General)

Bangor



HEALTH & CARE

P10642

NCFE CACHE Level 5 Diploma in Leadership for Health and Social Care Services (Northern Ireland)

Downpatrick, Lisburn, Newtownards

P11206

Foundation Degree in Integrative Counselling Practice (Validated by Ulster University)

Bangor

Code: P10637

Pearson BTEC HNC in Healthcare Practice

Newtownards

Code: P10126

CPCAB Level 4 Diploma in Therapeutic Counselling

Lisburn, Newtownards

Code: P10937

Level 4 Certificate in Counselling Studies (Validated by Ulster University)

Lisburn

Code: P10941

Foundation Degree in Integrative Counselling Practice (Validated by Ulster University)

Lisburn, Newtownards

Code: P10127

Level 5 Diploma in Cognitive Behavioural Therapeutic Skills and Theory

Newtownards

Code: P10642

NCFE CACHE Level 5 Diploma in Leadership for Health and Social Care Services (Northern Ireland)

Downpatrick, Lisburn, Newtownards

Code: P10639

Pearson BTEC HNC in Social and Community Work (Social and Community Work Practice)

Newtownards



HOSPITALITY & CATERING

Code: P11051

Foundation Degree in Culinary Arts (Validated by The Open University)

Bangor, Lisburn

“

I would totally recommend my course. Nowadays businesses want accredited people, and they look to see if chefs have the right qualifications. If they look at your CV and see this Culinary Arts Degree, they'll know you're dedicated to the industry. I never thought I would be able to reach this level in my education. What I've accomplished since I started SERC has been amazing.

”

Gemma Diamond

Foundation Degree in Culinary Arts (Validated by The Open University)



HIGHER LEVEL APPRENTICESHIPS AT SERC

WHAT IS A HIGHER LEVEL APPRENTICESHIP?

A Higher Level Apprenticeship (HLA) lets you earn while you learn, gaining accredited higher education qualifications whilst also developing skills in a professional setting. HLAs provide an opportunity for new and existing employees to progress in their studies, while working in their chosen field.

- BUSINESS & MANAGEMENT
- COMPUTING/SOFTWARE
- ENGINEERING/
NETWORKING
- CONSTRUCTION STUDIES
- EARLY YEARS
- ENGINEERING
- HEALTH & CARE
- HOSPITALITY & CATERING

BENEFITS OF AN HLA

- You are employed and paid at least the minimum wage
- Qualifications without tuition fees, so no student loan
- Apply your learning directly in the workplace
- A clear pathway for career progression
- Mentoring to support you throughout your HE programme

ELIGIBILITY

- You need to be employed, or about to take up employment, with a Northern Ireland-based company
- Working a minimum of 21 hours per week (including time spent in "off-the-job" training)
- Individual entry requirements will depend on the apprenticeship chosen

“

I've never really prioritised education until now but now that I am, I really enjoy it and the challenges my course gives me. The mechatronic course will give you a broad understanding of all engineering, you will work with software and hardware, which will make your engineering skills diverse – meaning you'll be valuable in any engineering career.

”

Jacob Jamieson
Higher Level Apprenticeship in
Mechatronics



HIGHER LEVEL APPRENTICESHIP COURSES



BUSINESS & MANAGEMENT

Code: P11170

Higher Level Apprenticeship in Leadership and Productivity Improvement

Online

Code: P10186

Higher Level Apprenticeship in Accounting Technicians Level 5

Bangor, Lisburn

COMPUTING/SOFTWARE ENGINEERING/NETWORKING

Code: P11069

Higher Level Apprenticeship in Cyber Security and Digital Forensics

Bangor

Code: P11264

Higher Level Apprenticeship in Cyber Security and Digital Forensics (BSc (Hons))

Bangor

CONSTRUCTION STUDIES

Code: P10190

Higher Level Apprenticeship in Building Services Engineering (HVAC)

Bangor

Code: P10191

Higher Level Apprenticeship in Construction Management

Bangor, Lisburn

Code: P10975

Higher Level Apprenticeship in Civil Engineering

Lisburn



EARLY YEARS

Code: P10195

Higher Level Apprenticeship in Leadership for Children's Care Learning and Development (Management)

Bangor, Downpatrick, Lisburn



ENGINEERING

Code: P10196

Higher Level Apprenticeship in Mechatronics

Bangor, Lisburn

Code: P11056

**Higher Level Apprenticeship in Advanced Technician
Mechanical and Manufacturing (General)**

Lisburn

Code: P11146

**Higher Level Apprenticeship in Industry 4.0 Manufacturing
(Validated by the Open University)**

Bangor

HEALTH & CARE

Code: P10193

Higher Level Apprenticeship in Health and Social Care

Downpatrick, Lisburn, Newtownards

HOSPITALITY & CATERING

Code: P11052

Higher Level Apprenticeship in Culinary Arts

Bangor, Lisburn

Code: P11207

**Higher Level Apprenticeship in Tourism, Hospitality and
Event Management**

Bangor



“

Just come along! It's not as daunting as you may think. If you have need of additional support, you will find it at SERC. If you are struggling, you have only to ask for help. From the start, the staff are so friendly, and the wee class group is great, everybody gets on. I would recommend SERC a hundred percent.

Jamie Miller

Higher Level Apprenticeship in Health and Social Care

”

RETURNING TO LEARNING

SERC provides a range of courses to encourage and support individuals to return to education. We work with voluntary and statutory organisations to engage with the local community and enable adults to connect with learning, gain qualifications and skills, and grow in confidence.

We offer short courses starting at different times throughout the year. To find out more, keep an eye on our website for news of current opportunities, or contact our engagement team [\[link to form\]](#)



“

Restart was great for getting me back into the swing of learning and it boosted my confidence. I wasn't sure about progressing to Access but my tutor, Roisin Malone, convinced me to give it a go. Both Restart and Access are designed for adult returners, so the tutors know everyone is juggling.

”

Laura McFarlane
Restart student

STUDENT SUPPORT

SERC is committed to supporting all students to meet challenges and achieve their aims. The college has an extensive network of support services and also works with a range of agencies to make sure help is there whenever it is needed.

Pastoral Care

We work with organisations such as Ascert, Aware, Inspire and the HSC to help you to overcome challenges and achieve your goals.

Learning Support

If you have additional needs, we have the facilities and staff to work with you to help you succeed.

Student Finance

It can be difficult to juggle your finances when you're a student. SERC publishes a range of guides and has a team of advisors to support you.

Careers

Our award-winning careers advisors can help you plan your path to achieving your ambitions.

Student Carers

If you have caring responsibilities at home, we understand that this can have an impact on your learning. We have a dedicated support service to offer help and advice.

Learning Resource Centres

If you need a place to study or help in finding resources to support your learning, we have Learning Resource Centres on each main campus with printed books and e-books and quiet study areas.

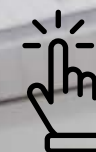
Little SERC Creche

Little SERC was set up in 2020 to provide safe, stimulating childcare to help parents enrolled on courses at SERC Newcastle Campus.



FOR MORE INFORMATION

Click titles for more information



WHY SERC?

- We have industry-experienced, qualified tutors
- State-of-the-art, professional-standard facilities
- Learning is rooted in practical challenges, developing the skills that you will apply in real life
- A curriculum developed with employers to align courses with industry needs
- A sustainable environment - SERC was awarded the prestigious Green Gown Award for our commitment to promoting sustainability
- We value and promote entrepreneurship, with dedicated workspaces and a team supporting students to develop business ideas [Click to visit website](#)
- Students' Union – All students, both full-time and part-time, are members of the Students' Union and can stand for positions such as class representative, welfare officer etc [Click to visit website](#)

APPLYING AND ENROLLING

1

STEP 1 APPLY

Visit www.serc.ac.uk and select a course to start the application process. There is no limit to the number of part time courses you can apply for.

2

STEP 2 NEXT STEPS

Interview Required: If your course requires an interview, you will be invited to attend a pre-entry advice and guidance session with the subject tutor. It's also a great opportunity to talk about the course and discuss the opportunities it opens up. After a successful interview, your application status becomes 'Approved'

No interview Required: If your course does not require an interview, you should contact the college to pay any associated fees and confirm your enrolment.

3

STEP 3 PAYMENT & ENROLMENT

If all entry requirements are met, you can enrol. Payments can be made by telephone, or in person at any SERC Campus reception.

REAL LEARNING AT SERC

Apply Now for Courses Starting in 2025/26



Click to visit our social media sites

